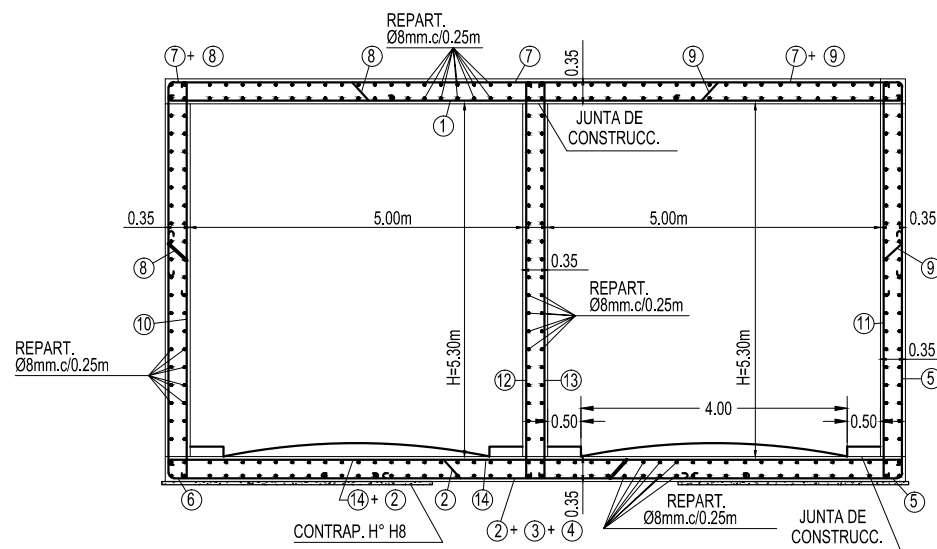
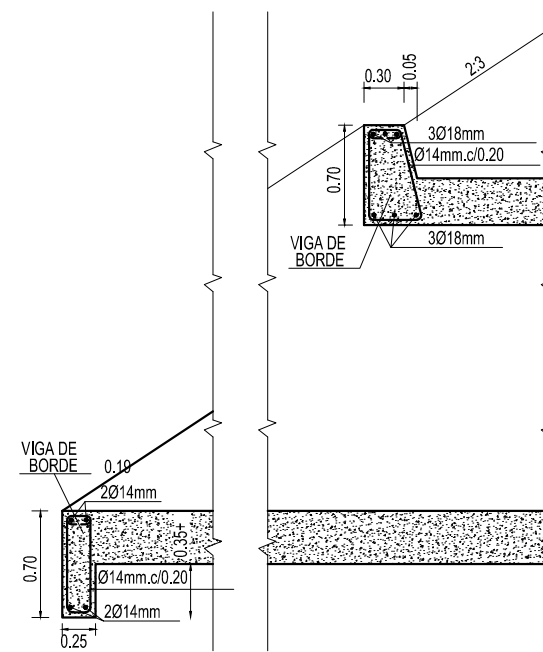


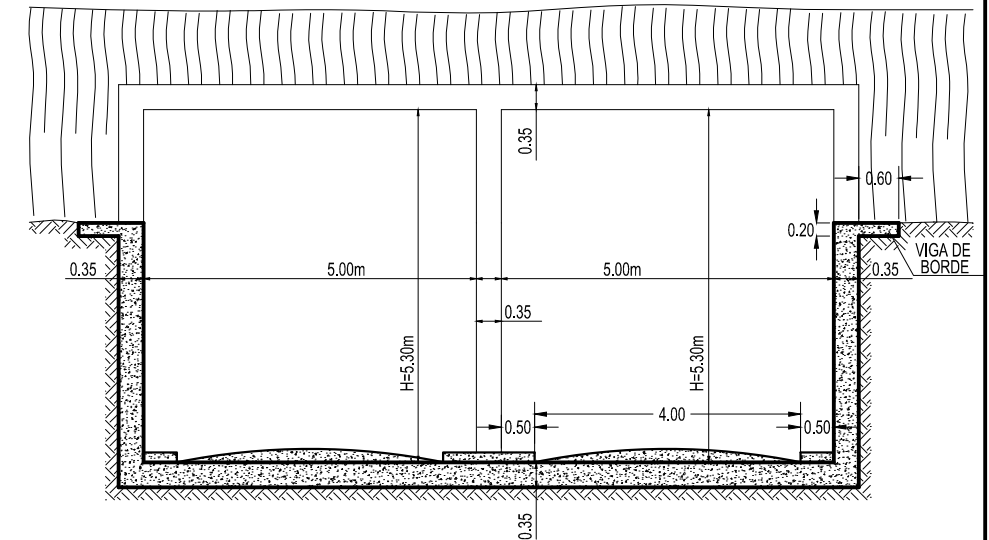
### DETALLE DE LA ARMADURA DEL CAJON



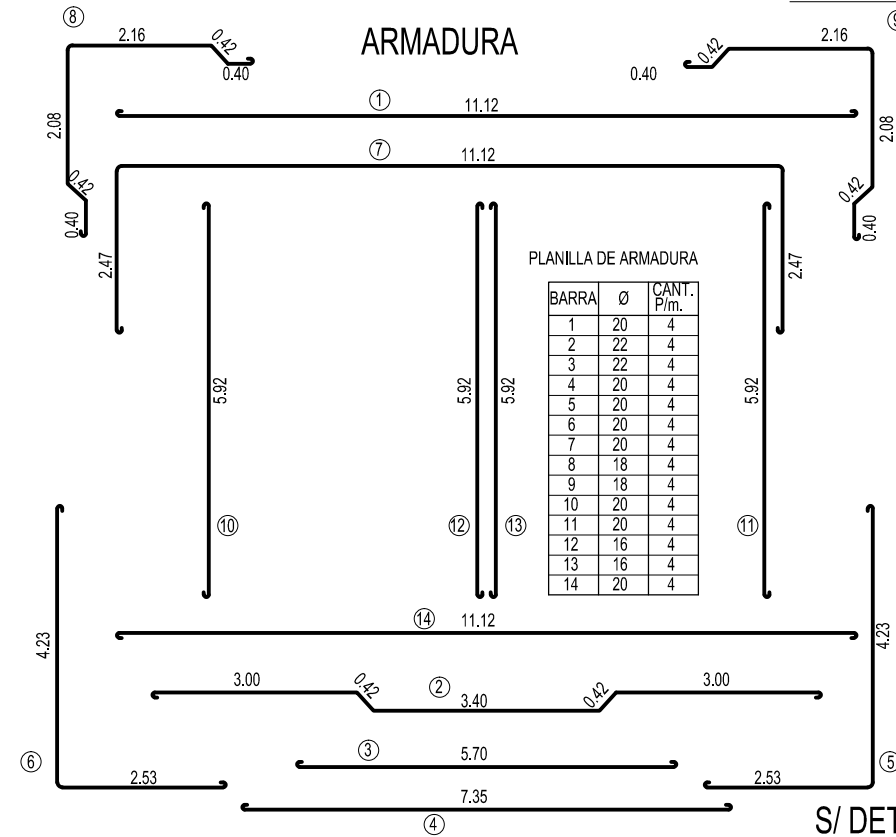
### DETALLE CORTE A-A



### CORTE B-B



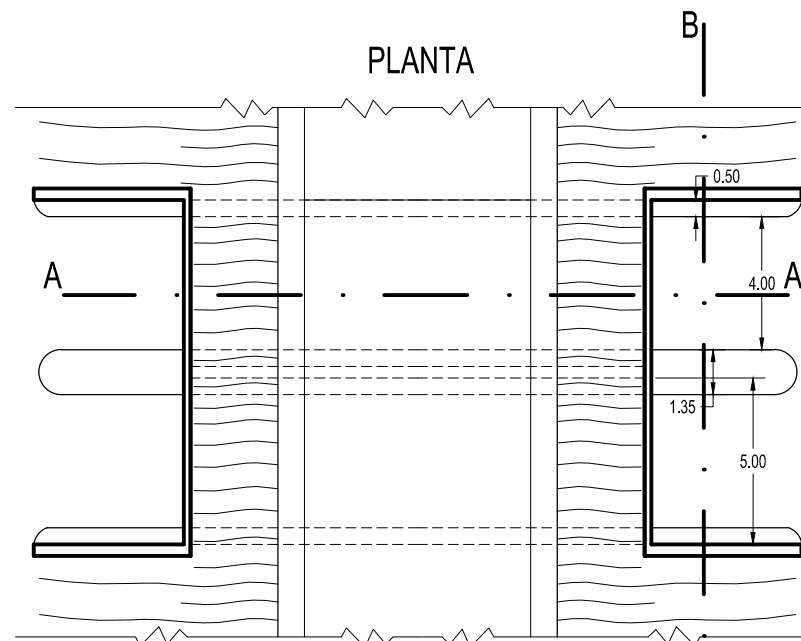
### ARMADURA



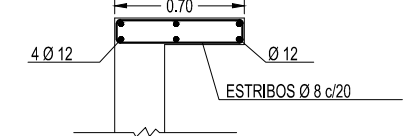
#### PLANILLA DE ARMADURA

BARRA	Ø	CANT. P/m.
1	20	4
2	22	4
3	22	4
4	20	4
5	20	4
6	20	4
7	20	4
8	18	4
9	18	4
10	20	4
11	20	4
12	16	4
13	16	4
14	20	4

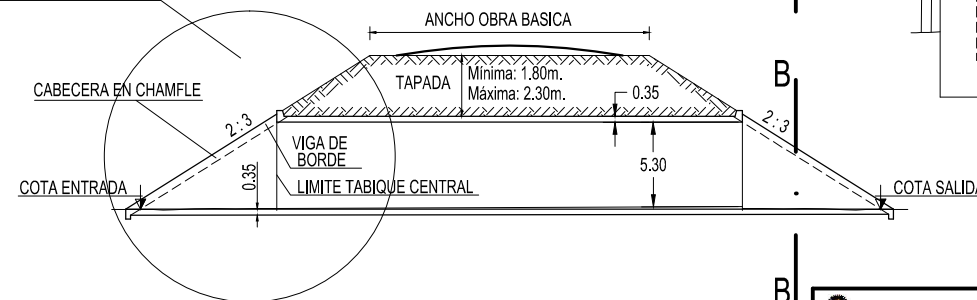
### PLANTA



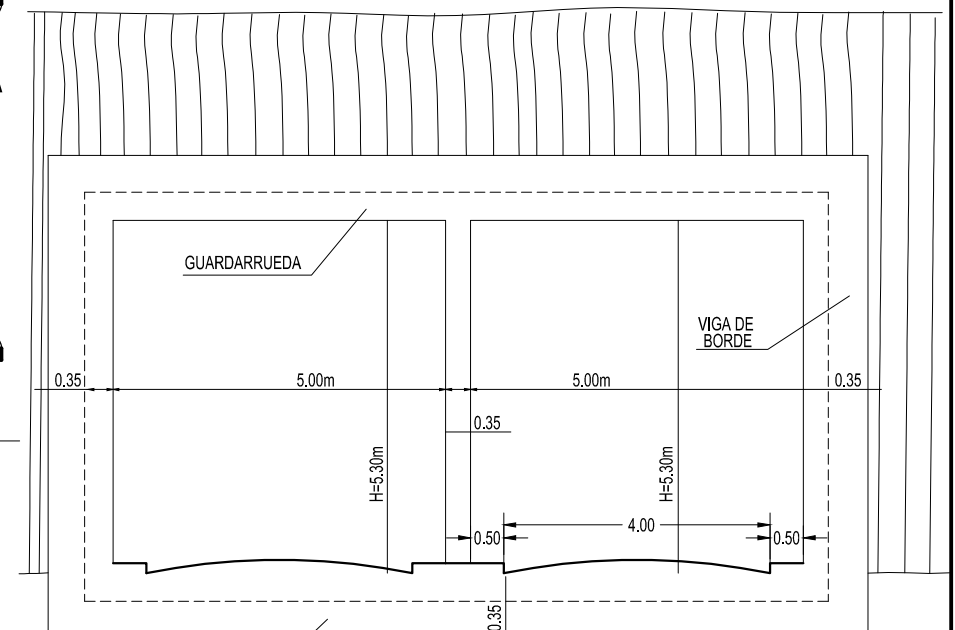
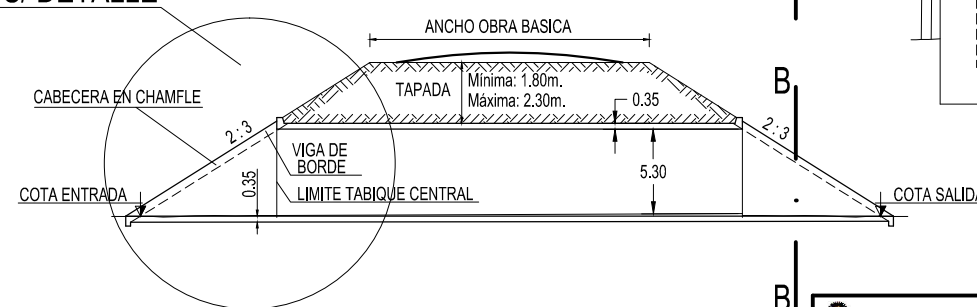
### ARMADURA DE BORDE



### S/ DETALLE



### CORTE A-A



### VISTA

#### DATOS FIJADOS EN EL PROYECTO

ANCHO OBRA BASICA	A.O.B. =
TAPADA	T. =
COTA DE FUNDACION MURO DE ALA	G. =
COTA DE FUNDACION DE LA ALCANTARILLA	D. =
OBLICUIDAD	∞ =
ALTURA ALCANTARILLA	H. =
ALTURA MURO DE ALA	H <sub>2</sub> =
	H <sub>1</sub> =
LARGO DE LA ALCANTARILLA	J. =



Ministerio de Transporte  
Presidencia de la Nación

VIALIDAD NACIONAL

ADAPTACIÓN PARA CRUCE VEHICULAR  
DE ALCANTARILLA CAJON DE H° A°  
L=5.00m H=5.30m



UNGARO, ALE ORTIZ INGENIEROS ASOCIADOS S.A.

PLANO TIPO:

MODIFICADO DE SU ORIGINAL